

netis

Wireless-N Router Quick Installation Guide

Package Contents

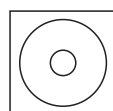
*This QIG is shared by netis wireless router.



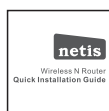
Wireless router



Power Adapter



Resource CD

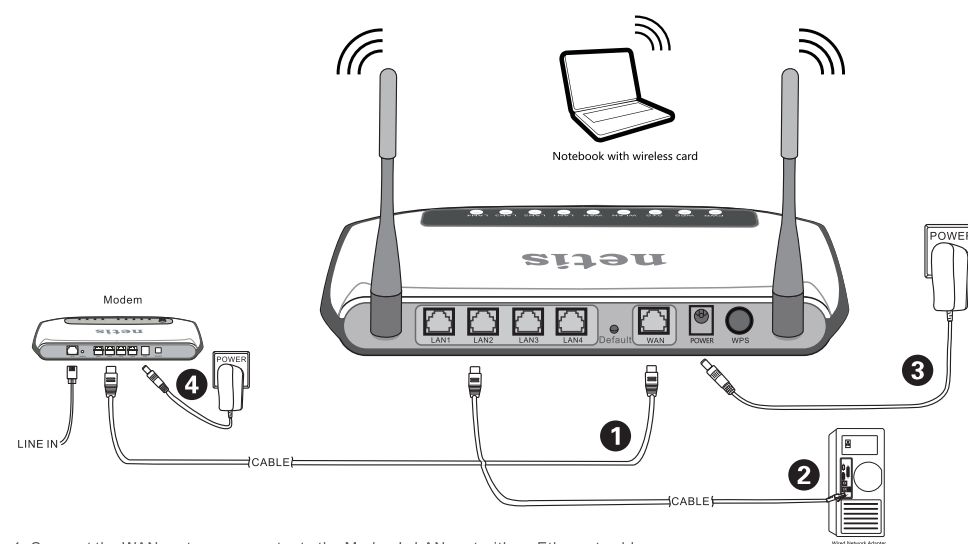


QIG

System Requirement

• Windows 7 • Windows Vista • Windows XP • Windows 2000

1. Hardware Connection

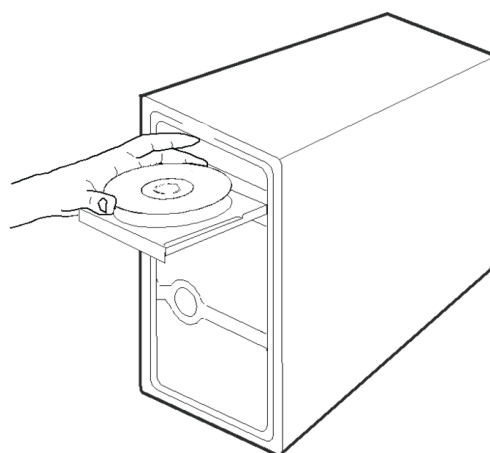


1. Connect the WAN port on your router to the Modem's LAN port with an Ethernet cable
2. Connect your computer to any LAN port on netis router with an Ethernet cable
3. Plug in the power adapter of netis router
4. Unplug your ADSL or Cable Modem power at least 15 seconds and plug it back in

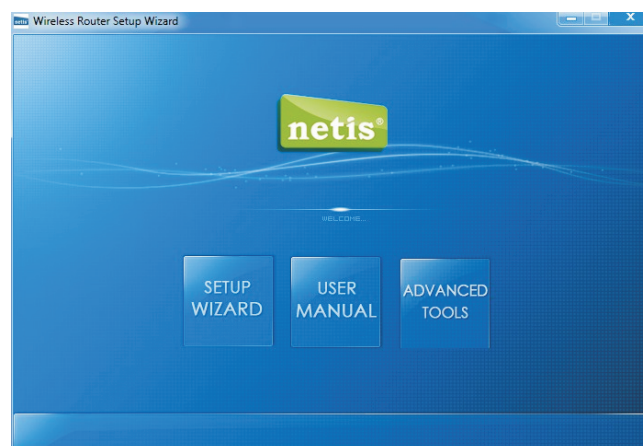
2. Connecting by Easy Setup Assistant

The Easy Setup Assistant is not supported in Linux or Mac OS. If you are running without CD-ROM, Please refer to **Appendix 1**.

- 1 Insert the netis resource CD into the CD-ROM drive.



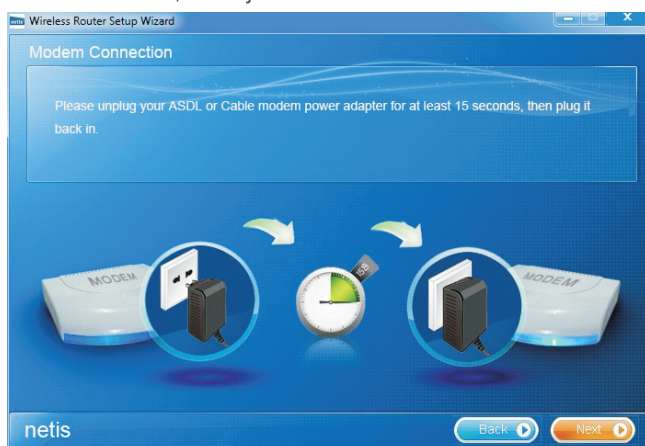
- 2 Here will coming up the Welcome page



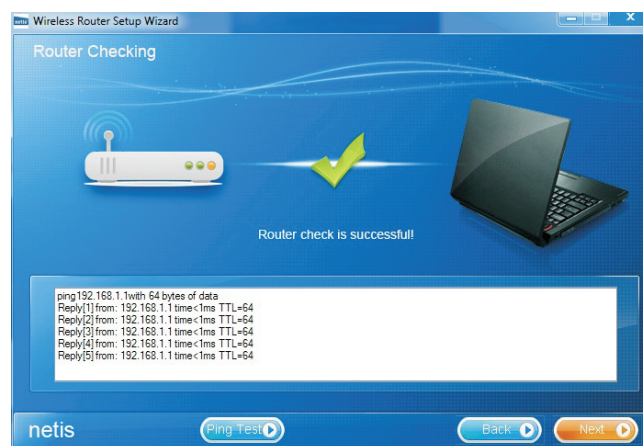
- 3 After confirming the hardware connection and the status of LEDs, Click **NEXT** to continue.



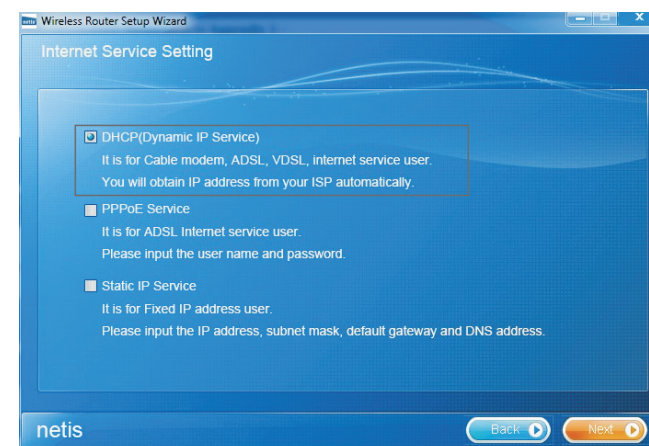
- 4 Please unplug your ADSL or Cable Modem power adapter for at least 15 seconds then plug it back in. if you had already done this step on the hardware connection , then just click NEXT to continue



- 5 After the connectivity is checked successfully, please click **NEXT**.

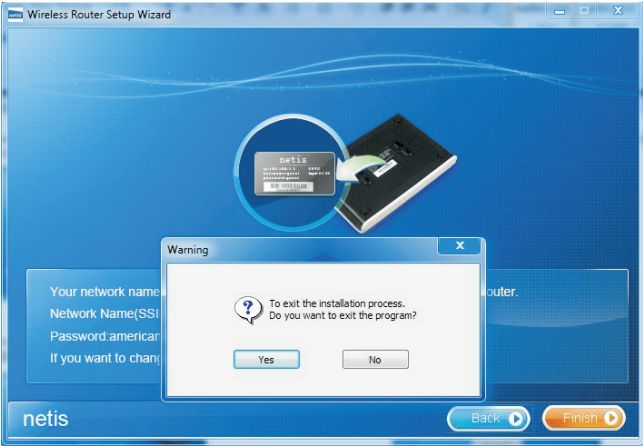
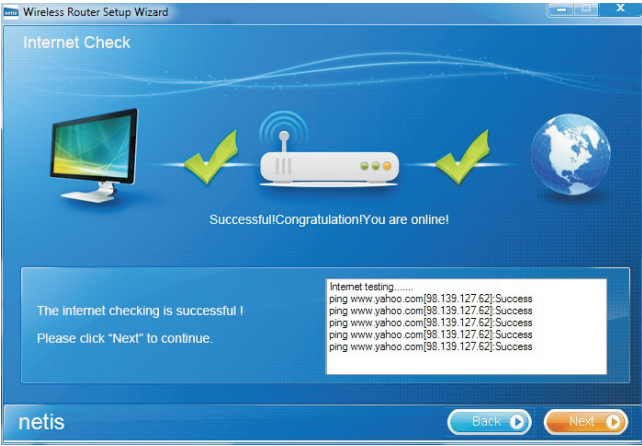
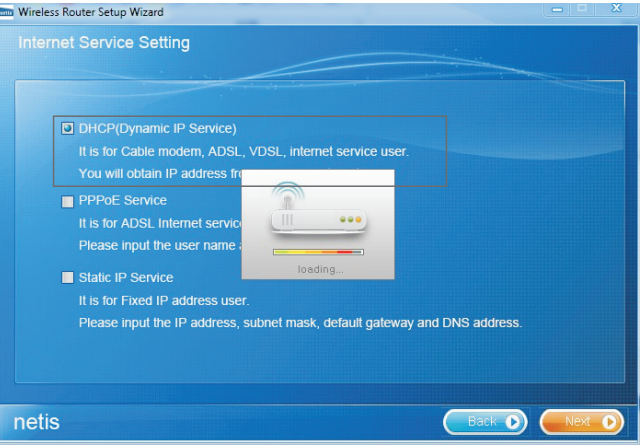


- 6 Select the connection type your ISP provides and click NEXT. Here we take DHCP connection for example.

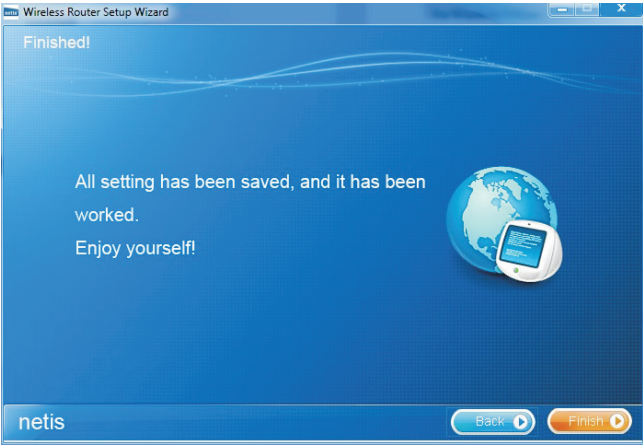
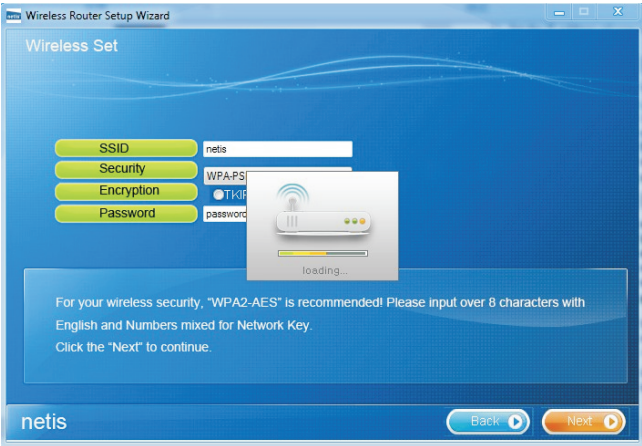


2.Connecting by Easy Setup Assistant (continued)

- 7 Click NEXT and the router will automatically load the config.
- 8 Congratulations! You are online . If you wanna set the Repeater and WiFi.You can click NEXT
- 9 After this page appear , click NO to the Advance Tool



- 10 Here we take Network Name&Security for example
- 11 After simply click this icon You will guide to this page. You also can follow our default setting and click NEXT. And we recommend you set your personal SSID and Password.
- 12 Great. The router is been successfully setting and encryption. Then click Finish to close the wizard

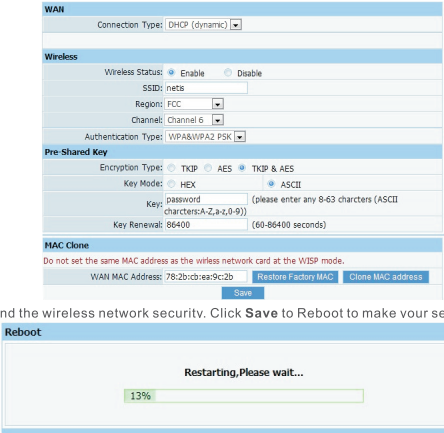


You can also Set the Repeater setting by advance tool.

You can enter 192.168.1.1 from your browser to use WEB management interface for more advanced settings.

Appendix 1: Connecting by WEB Management Interface

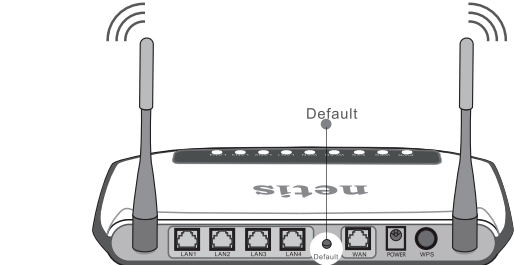
- You can go to WEB management interface to configure your Router.
- 1) Set the IP address of your wired network adapter as **Automatically**.
- For Windows 7/Vista**
- Go to **Start > Settings > Control Panel**. Click **View network status and tasks > View status > Properties** and double-click . Right-click **Local Area Connection**, select **Properties** and then double-click **Internet Protocol Version 4 (TCP/IPv4)**. Select **Obtain an IP address automatically**, choose **Obtain DNS server address automatically** and click **OK**.
- For Windows XP/2000**
- Go to **Start > Control Panel**. Click **Network and Internet Connections > Network Connections**. Right-click **Local Area Connection**, select **Properties** and then double-click **Internet Protocol (TCP/IP)**. Select **Obtain an IP address automatically**, choose **Obtain DNS server address automatically** and click **OK**.
- 2) Open your browser and **type 192.168.1.1** in the address field, then you can automatically login the UI
- 3) Go to **Quick Setup** and click **Next**. Select the Connection Type you use. Here we take **DHCP** for example



- 4) Configure your **network name (SSID)** and the wireless network security. Click **Save** to Reboot to make your settings effective

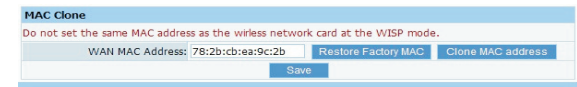
Appendix 2: Troubleshooting

- Q** How do I restore my Router's configuration to its factory default settings?
- A** With the Router powered on, press and hold the Default button on the rear panel for 8 to 10 seconds using a pin before releasing it.



You can refer to our User manual on the CD to set up more functions of the Router.

- What can I do if I cannot access the Internet?**
- 1) Check to see if all the connectors are connected well, including the telephone line (for your modem), Ethernet cables and power adapter.
 - 2) Check to see if you can access the Router's web management page. If you can, please follow the following steps to solve the problem. If you can't, please refer to **Appendix 1**.
 - 3) Make sure that you are connected to the netis Router with the computer that was originally connected to your modem, then log on to the web-based management page and browse to **'Network > MAC Clone'**, click **'Clone MAC Address'** and then click **'Save'**. Reboot the Router



USA/Canada Technical Support:

Phone (toll free in USA & Canada):
1-866-711-network or 1-866-716-3896
Email: usa_support@netis-systems.com
for North America only

netis SYSTEMS CO.,LTD.
<http://www.netis-systems.com>
MADE IN CHINA